

Chapter 2

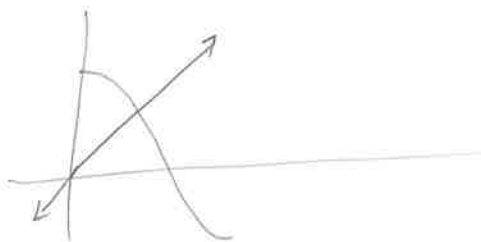
Solutions of Equations of one variable

The solution to the equations sometimes cannot be solved explicitly. In these cases, we may need to find an approximation to the exact solution.

For example, suppose $f(x) = \cos x - x$.

Where is $f(x) = 0$? \Rightarrow where $\cos x = x$.

It is clear that a solution exists from the graph!



We will be developing methods to solve these equations.